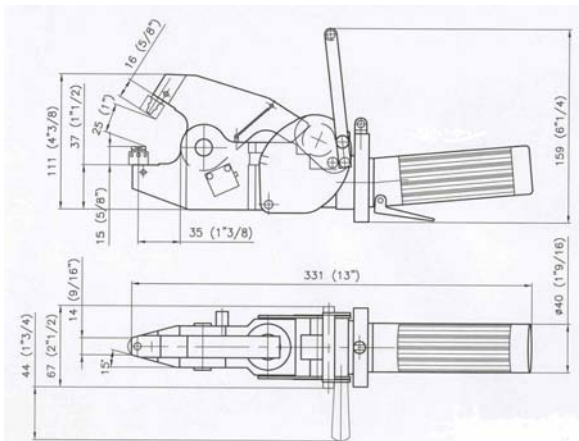
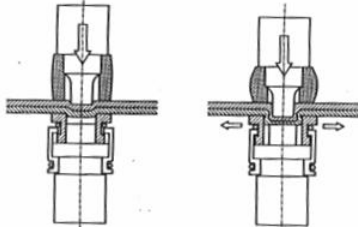


## Single-stroke clinching

In single-stroke clinching, the overlapping sheet material members are drawn into the die cavity. When the die side layer reaches the anvil at the bottom of the cavity, a clinch joint will be created through the squeezing between the punch and the anvil.



## Technical specifications

Workhead weight	3.7 kg	8.1 lbs
Drive pressure	6 bar	87 psi
Cycle time	0.6-0.9 s	
Maximum material thickness		
mild steel	3.0 mm	0.120"
aluminium	3.0 mm	0.120"

## Article number

**74 00006** Alligator 0302 AS V4, complete with workhead, handle, rotator, hose and booster, ready to be connected to a source of dry and clean compressed air at 6 bar, 87 psi

## Options

**92 70330** Upgrade to 3m, 10ft hose length

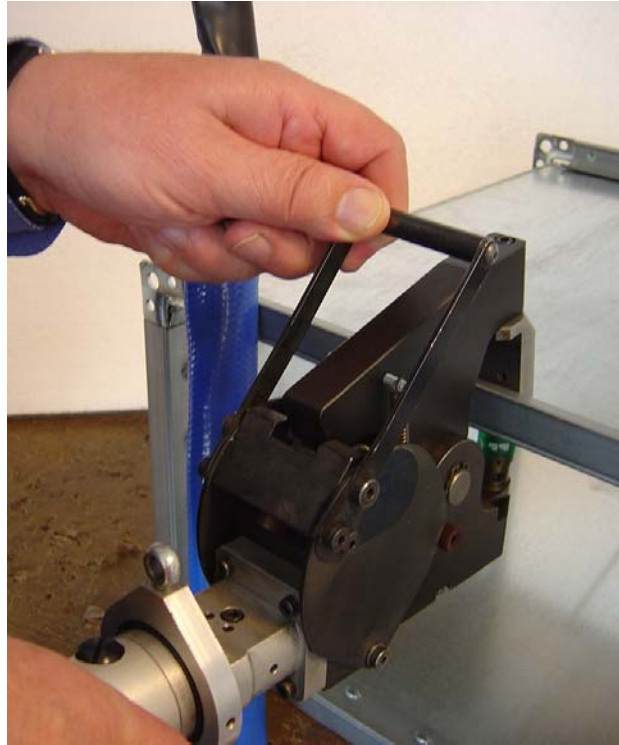
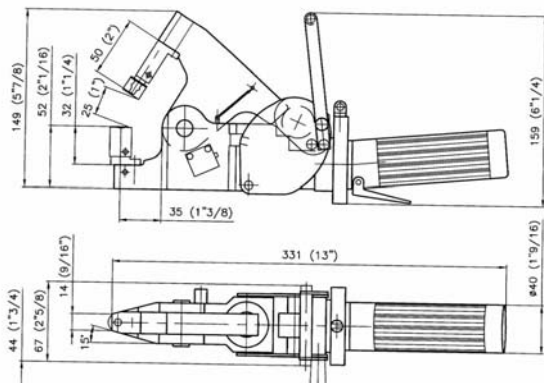
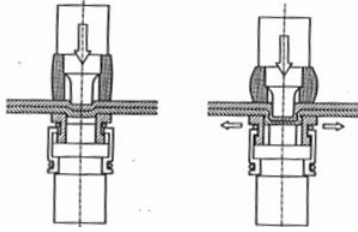
## Tool kits

To be selected from the table below

Mild steel , copper, materials with ductility >20%				
Total thickness	1.0-1.5 mm, 0.040-0.060"	1.5-2.0 mm 0.060-0.080"	2.0-2.5 mm 0.080-0.100"	2.5-3.0 mm 0.100-0.120"
<b>4-bladed round</b>	92 30700	92 30701	92 30702	72 00028
<b>2-bladed round</b>	92 30750	92 30751	92 30752	72 00031
<b>Rectangular</b>	92 30800	92 30801	92 30802	92 30803
Aluminum, brittle material				
<b>4-bladed round</b>	92 30705	92 30706	92 30707	72 00040
<b>2-bladed round</b>	92 30755	92 30756	92 30757	72 00043
<b>Rectangular</b>	92 30800	92 30801	92 30802	92 30803

## Single-stroke clinching

In single-stroke clinching, the overlapping sheet material members are drawn into the die cavity. When the die side layer reaches the anvil at the bottom of the cavity, a clinch joint will be created through the squeezing between the punch and the anvil.



## Technical specifications

Workhead weight	3.7 kg	8.1 lbs
Drive pressure	6 bar	87 psi
Cycle time	0.6-0.9 s	
Maximum material thickness		
mild steel	3.0 mm	0.120"
aluminium	3.0 mm	0.120"

## Article number

**74 00008** Alligator 0302 AS V6, complete with workhead, handle, rotator, hose and booster, ready to be connected to a source of dry and clean compressed air at 6 bar, 87 psi

## Options

**92 70330** Upgrade to 3m, 10ft hose length

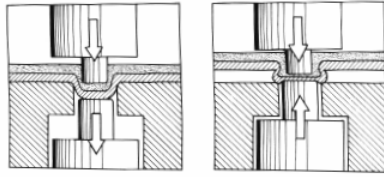
## Tool kits

To be selected from the table below

Mild steel , copper, materials with ductility >20%				
Total thickness	1.0-1.5 mm, 0.040-0.060"	1.5-2.0 mm 0.060-0.080"	2.0-2.5 mm 0.080-0.100"	2.5-3.0 mm 0.100-0.120"
<b>4-bladed round</b>	92 30730	92 30731	92 30732	72 00029
<b>2-bladed round</b>	92 30790	92 30791	92 30792	72 00032
<b>Rectangular</b>	92 30830	92 30831	92 30832	92 30833
Aluminum, brittle material				
<b>4-bladed round</b>	92 30735	92 30736	92 30737	72 00041
<b>2-bladed round</b>	92 30795	92 30796	92 30797	72 00044
<b>Rectangular</b>	92 30830	92 30831	92 30832	92 30833

**Double-stroke clinching**

In double-stroke clinching, the overlapping sheet material members are pushed



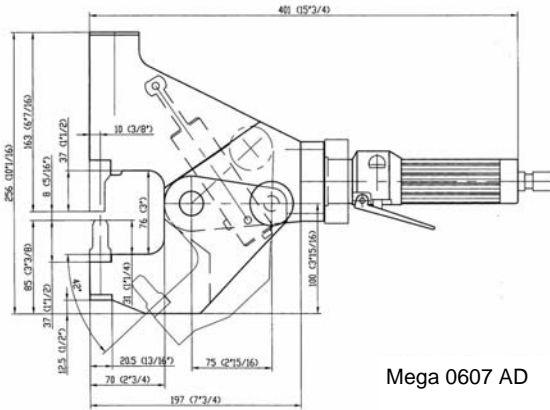
into the die to make a pre-form. In a second phase this pre-form is squeezed between the mechanically locked anvil and the punch, outside of the die. The entire process is completely automatic and requires no action from the operator, other than just pressing the trigger. The Mega line also features automated opening-closing of the jaws, activated by a second trigger on the handle.

**Technical specification**

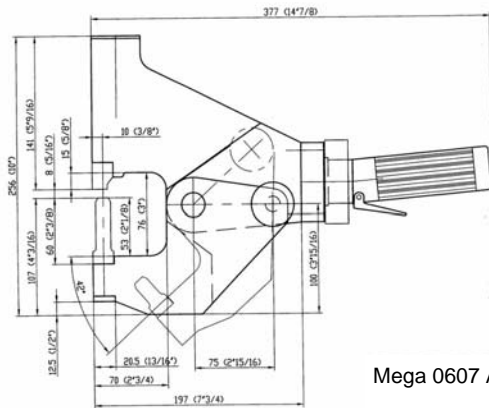
Workhead weight	12 kg	25 lbs
Drive pressure	6 bar	87 psi
Cycle time	1.0-1.5 s, 0.9 with HSB	
Material thickness,		
mild steel	4.0 mm	0.160"
stainless	3.0 mm	0.120"

**Article numbers**

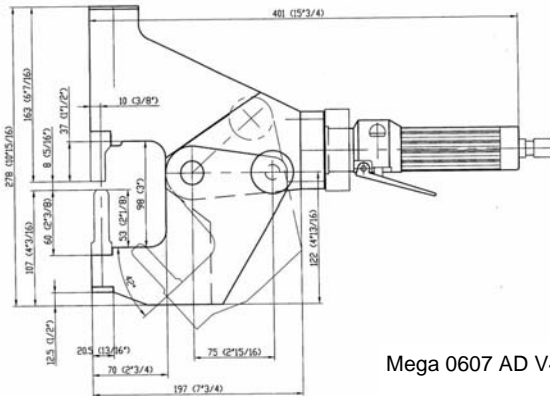
- 74 00014 Mega 0607 AD AU GY
- 74 00016 Mega 0607 AD V3 AU GY
- 74 00018 Mega 0607 AD V4 AU GY
- 72 00107 High Speed Booster, HSB



Mega 0607 AD



Mega 0607 AD V3



Mega 0607 AD V4

